

PE-STEEL TRANSITIONAL FITTINGS

www.smartjoint.net

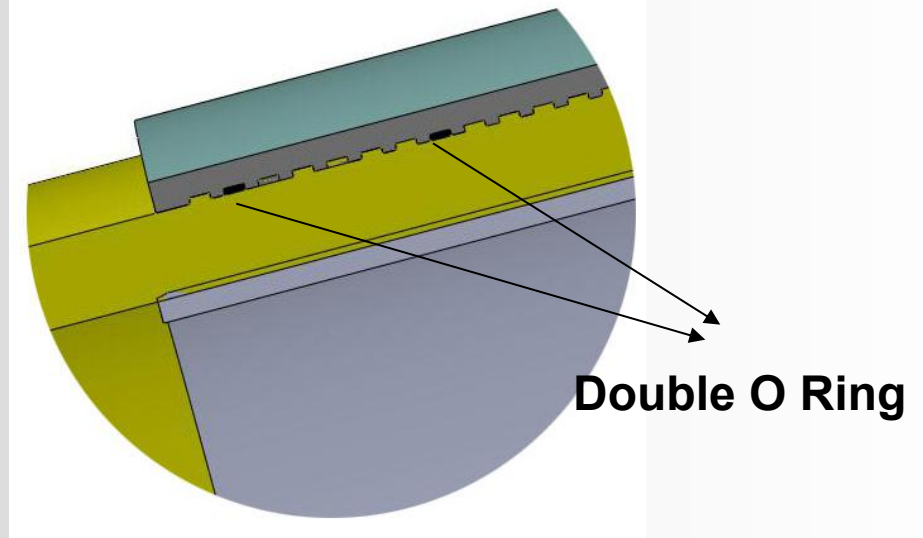
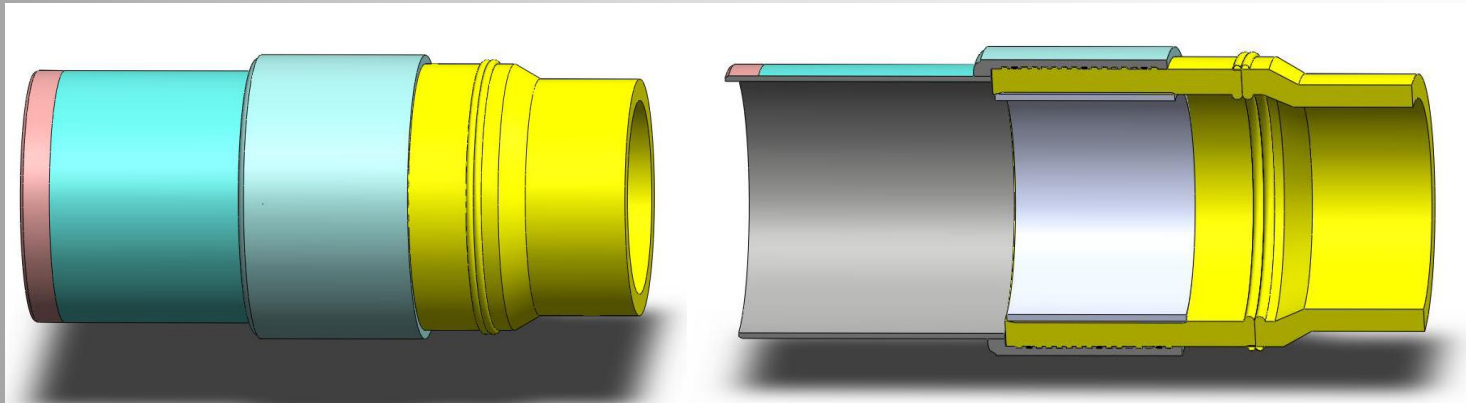
Introduction

Smart Joint focus on PE fitting, pipe and fusion machine production and aim to offer customer a complete solution.

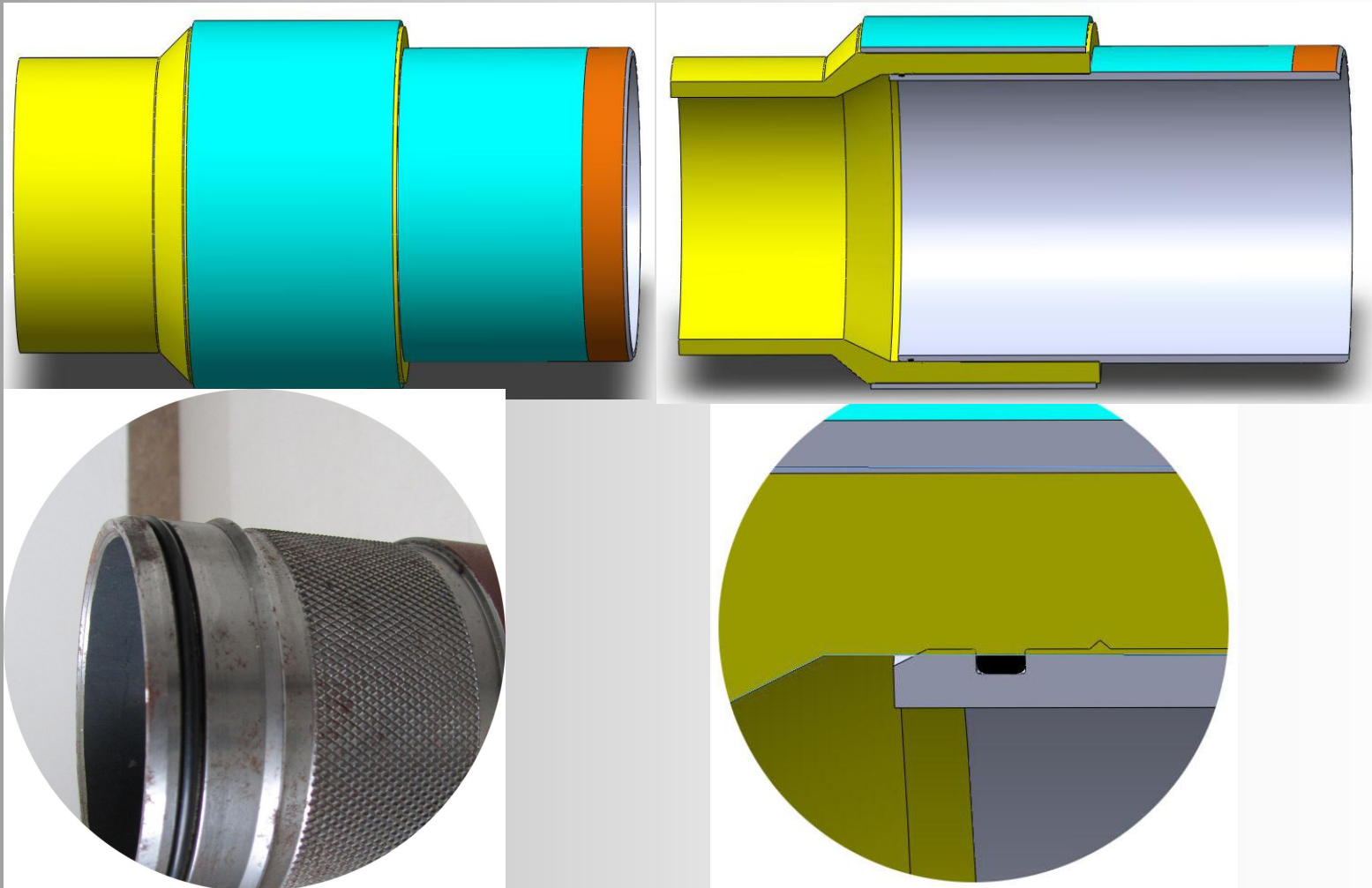
PE-steel transitional fitting is a vital fitting to transit steel pipe to PE pipe. It's widely used in gas piping line. Smart Joint started PE-steel transitional fitting production from 2000 and was the first manufacturer. Smart Joint offered the first batch of PE-steel transitional fitting to one of the earliet gas company in China, Haerbin gas company. Up to now, these fittings are still under service and perfomed well in -40° C winter time. At present, smart joint can produce these transition fitting up to 630mm and 24".

Structure Design

Type 1: Internal insertion structure-same as USA central plastic



Type 2: External Insert Structure Same as Germany Friatec



Standard

1Product Standard			
1	ISO 10838-1: 2000 (E) GB26255-1	Mechanical fittings for polyethylene piping systems for the supply of gaseous fuels – part1: metal fittings for pipes of nominal outside diameter less than or equal to 63mm	ISO
2	ISO 10838-2: 2000 (E) GB26255-2	Mechanical fittings for polyethylene piping systems for the supply of gaseous fuels – part2: metal fittings for pipes of nominal outside diameter greater than to 63mm	ISO

Production Flow



Steel Pipe Cut



CNC Lathing Machining



Large Diameter Steel Pipe Part Welding and Joint Test

Production Flow



Rust Removal



Epoxy Coating



Press



Finished Products

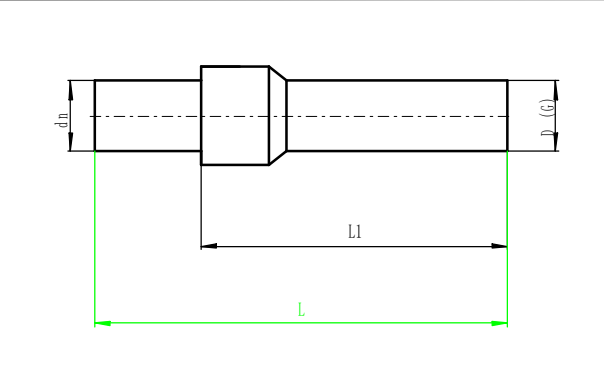
TEST



Pull-out



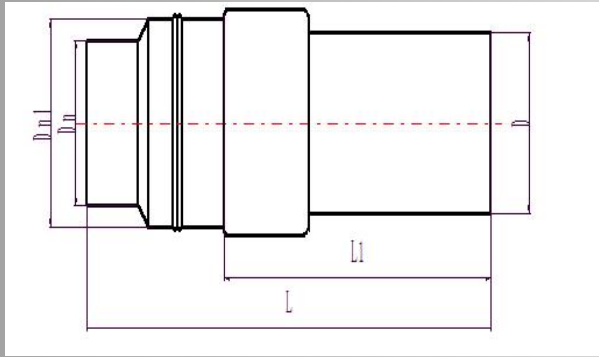
Hydrostatic Pressure Test



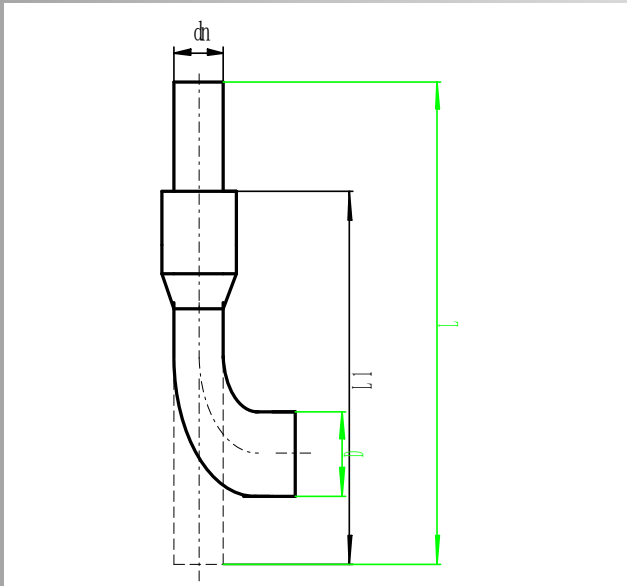
Type	dn(mm)	Straight PE- Steel Transitional		
		L1	L	D
Internal	32	≥290	≥495	34*3.5
Internal	40	≥340	≥535	42*4.5
Internal	50	≥390	≥585	50*4.5
External	50	≥390	≥585	50*4.5
Internal	63	≥400	≥600	60*5
External	63	≥400	≥600	60*5
Internal	90	≥235	≥680	89*6
Internal	110	≥245	≥520	108*6
Internal	160	≥375	≥580	159*6



Type	dn(mm)	Straight PE- Steel Transitional	
		L1	D
EF	32	≥ 290	34*3.5
EF	40	≥ 340	42*4.5
EF	50	≥ 390	50*4.5
EF	63	≥ 400	60*5



Type	dn(mm)	Straight PE- Steel Transitional Fitting			
		L1	L	D	Dn1
External	200	≥515	≥715	219*8	250
External	250	≥515	≥910	273*8	315
External	315	≥545	≥930	325*8	400
External	400	≥600	≥900	426*9	450
External	450	≥650	≥850	426	
External	630	≥800	≥1100	610	



Type	dn(mm)	PE-Steel Transitional Bend With Internal Insert Structure		
		L1	L	D
Internal	32	≥340	≥495	34*3.5
Internal	40	≥390	≥535	42*4.5
Internal	50	≥440	≥585	50*4.5
External	50	≥440	≥585	50*4.5
Internal	63	≥670	≥860	60*5
External	63	≥670	≥860	60*5
Internal	90			
Internal	110			
Internal	160			